

# Extreme Duty Rotary Hand Pump

For Any liquids Compatible with Stainless Steel & PTFE (Teflon)

Model No. DM-55RHP-STV, All Components, 304 Stainless steel & PTFE

## Benefits & Features:

- Transfer any liquid compatible with Stainless Steel & PTFE
- Self-priming, it dispenses about 10 strokes per gallon
- Suitable for liquid thicknesses up to 800 Centipoise
- 2" Npt adapter & suction tubes fits 15, 30, 55 gal. drums
- Bung adapters available to operate in virtually any drum



This is an **Xtreme Duty, Stainless Steel & PTFE (Teflon) Hand Pump**. Of high quality construction, it is useful for variety of applications including sanitary and extreme liquids up to 800 Cps., (medium thickness).

**(NOTE: Bung Adapters are available to fit in all drums with coarse thread bung-holes.)**

It is capable of transferring up to 10 strokes per gallon of any liquids compatible with Stainless Steel & PTFE (Teflon) including sanitary grade solutions and compounds, aggressive alkaline or acid liquids, chemicals and solvents such as esters, ketones, alcohols, hydrocarbons and industrial chemicals, petroleum based liquids such as fuels, oils, brake and transmission fluids and solvents, water based chemicals, detergents, cleaners, and most other liquids.

Self-priming, the pump is used in 15, 30, 55 drums or containers with a 2" Npt bung-hole. The pump can dispense into small containers on the drum or tank lid, or with optional attached (User supplied) hose, can deliver liquids within a reasonable distance. The pump is designed for rugged duty use in the shop, factory, field, dock, ship, landing strip or other service facilities.

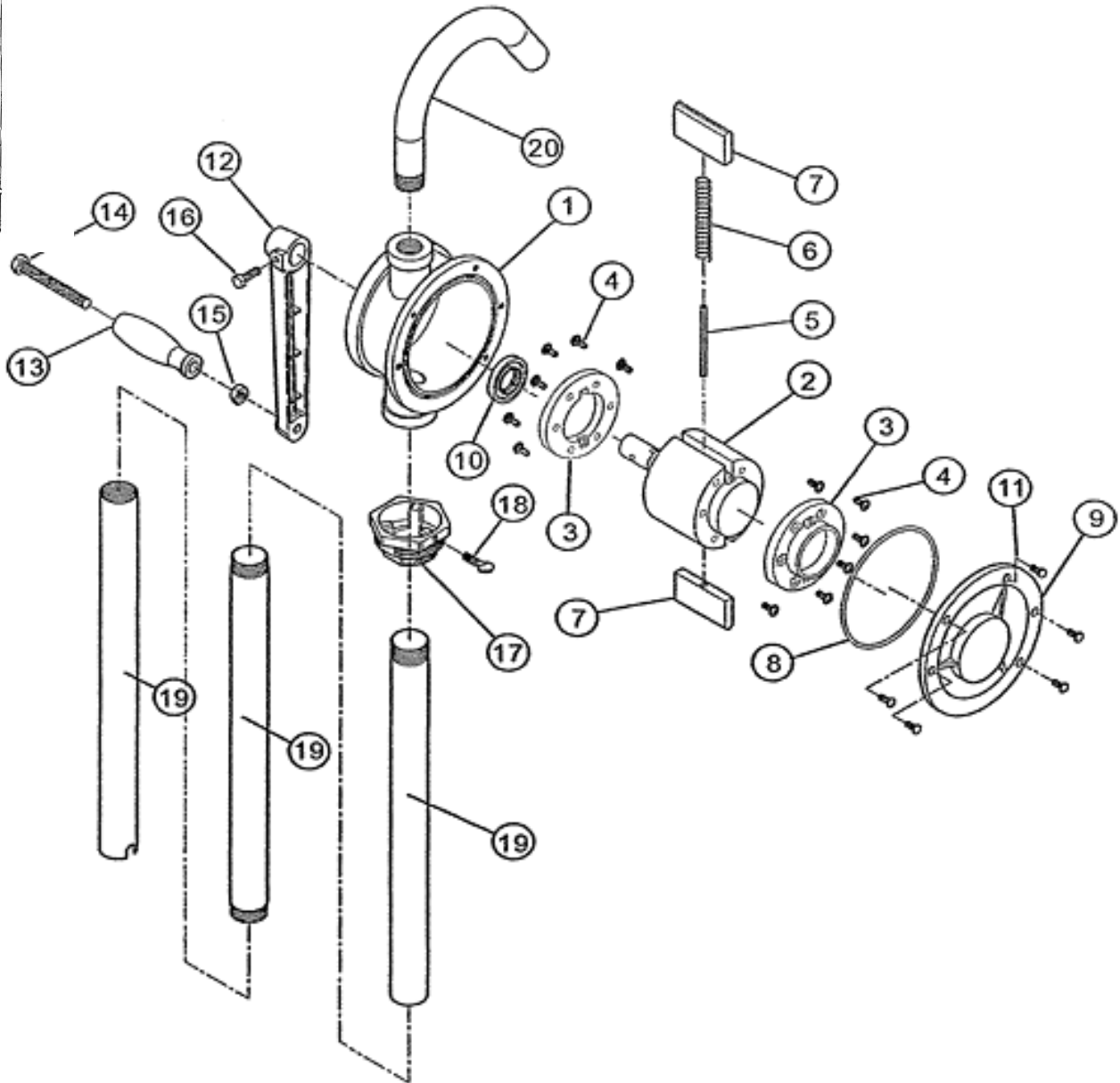
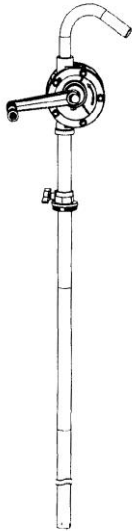
## Specifications:

- **Pump Type:** Hand, Rotary, PTFE Vanes, 304 stainless steel rotar
- **Viscosity:** 800 Cps (Centipoise), SAE-50, 3700 SSU (Saybolt Units)
- **Flow Rate:** 12 ounces per rotation, 10 Gpm @135 Rpm, Self-priming
- **Materials:** Materials of Construction: 304 Stainless Steel, PTFE (Teflon)
- **Suction Tube:** 3 Piece Tube, 40" Maximum length, 304 Stainless Steel
- **Inlet/Outlet Size:** 1.0" Inlet, 3/4" Curved Spout
- **Pump Length:** 53 inches, over-all-length
- **Temperature:** Maximum, 140°F, (60°C) (with suitable personnel safety gear protection)
- **Mounting Size:** 2" Male-NPT Bung Adapter. **(Note: Coarse Thread Converters available in all sizes)**
- **Unit Weight:** 13 lbs. per pump, 4 pc /Master Ctn, Wt: 52 lbs. (24Kg)
- **Optional Items:**
  - P# **DM-100PPH/PVC-5**, 1" PVC, transfer hose with SS clamp (Teflon hose available)
  - P# **DM-800SPW-T** Teflon Transfer Wand, 1" M-Npt x 12" L, (attaches to transfer hose end)
  - P# **DM-55RHP/STV-MK**, pump service Maintenance Kit with vanes, springs and pins

**P# DM-55RHP-STV**  
**Parts Exploded View**

**PARTS LIST**

No.	PARTS LIST	QTY	No.	PARTS LIST	QTY
1	Cylinder	1	11	Screws	5
2	Rotor	1	12	Crank Arm	1
3	Rotor cover	2	13	Handle	1
4	Screws	12	14	Handle rivet	1
5	Pin-Vane	1	15	Nut	1
6	Spring	1	16	Hexagon bolt	1
7	Vane	2	17	Adapter Screw	1
8	O-Ring	1	18	THUMB SCREW	1
9	Head	1	19	Suction tube	3
10	seal	1	20	spout	1



**DRUM-MATES, Inc.**  
 Email: [info@drummates.com](mailto:info@drummates.com)  
 Tel: 609-261-1033, Fax: 609-261-1034